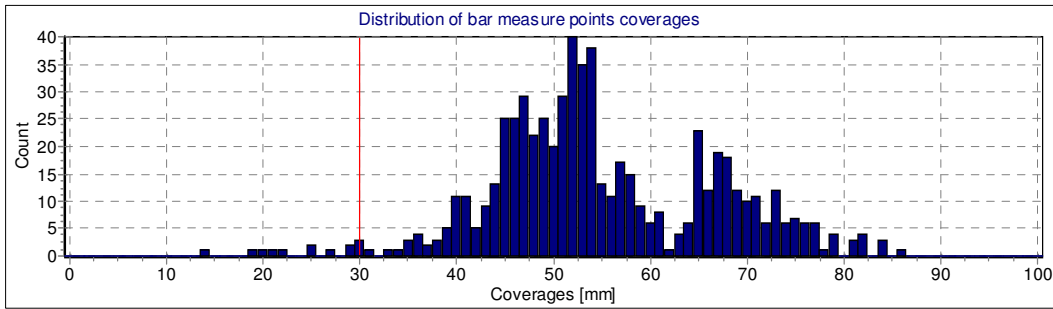
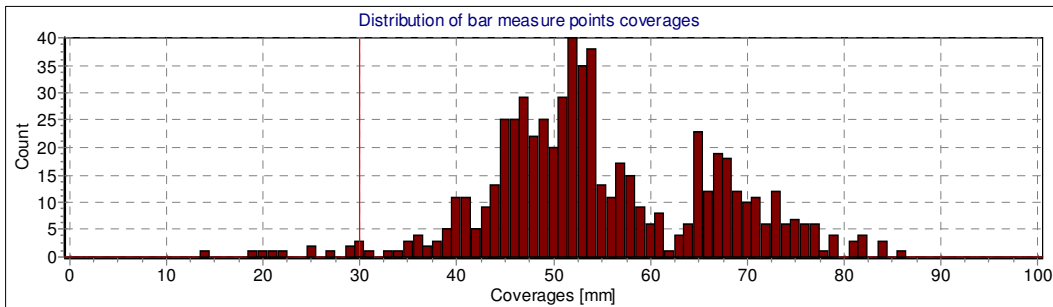


Calculated Statistic Data - Neville probability distribution with parameter estimation



number of bars:	624	arithmetic mean:	55 mm	top removal:	0 mm
minimum value:	14 mm	median:	53 mm	c_min:	30 mm
maximum value:	86 mm	standard deviation:	12 mm	cut-off:	100 mm
#bars below c_min:	10	5% quantile:	39 mm	10% quantile:	42 mm

Calculated Statistic Data - Neville probability distribution with parameter estimation and upper limit



For the Neville distribution the upper limit is calculated and taken into account

calculated upper limit: 112 mm

number of bars:	624	arithmetic mean:	55 mm	top removal:	0 mm
minimum value:	14 mm	median:	53 mm	c_min:	30 mm
maximum value:	86 mm	standard deviation:	12 mm	cut-off:	100 mm
#bars below c_min:	10	5% quantile:	39 mm	10% quantile:	42 mm

top removal: calculated upper limit: cut-off: